

# CEMENT CORPORATION OF INDIA LIMITED

(A Govt. Of India Enterprise)

NITNO.:RCF/MECH / FLY ASH STORAGE SILO/ 3078 /2024-25/01

Dt:23.01.2025

## NOTICE INVITING E-TENDER (Only through e-procurement)

Online electronic bids through Electronic Tendering System(ETS) are invited from manufacturers having Adequate “**Design, Engineering, Manufacturing, Supply, erection, Supervision, Commissioning & Hooking up with cement mill for FLY-ASH STORAGE SILO of capacity 200MT with feeding, regulating and measuring system including civil work for Cement Mill of Rajban Unit on turnkey basis.**”

The tender should meet the eligibility criteria as stated in the tender for qualifying the Techno Commercial Bid. The Complete set of tender documents is available on websites [www.ccilttd.in](http://www.ccilttd.in) and [www.etenders.gov.in](http://www.etenders.gov.in).

E-TENDER NO.	RCF/MECH / FLY ASH STORAGE SILO/ 3078 /2024-25/01
MODE OF TENDER	E-procurement system open-tender (Online Two Bid, through etenders.nic.in.
Date of NIT available to parties to download	<b>From : 23.01.2025 at 11:30 hrs</b> <b>Till : 06.02.2025 at 14: 30 hrs</b>
Last date of submission of EMD, valid SSI/NSIC/MSME certificate and other documents required as per tender terms & conditions under covering letter	<b>Rs.370000/-</b> (Through e-payment gateway only as per Clause No.1.0 of Part-II)
Date of starting of open e-tender for submission of on line Techno-Commercial Bid and Price Bid at <a href="http://eprocure.nic.in">eprocure.nic.in</a>	<b>From: 23.01.2025 at 11: 30 hrs</b> <b>Till : 06.02.2025 at 14: 30 hrs</b>
Date & time of opening of Part-A, Techno commercial bid Part-B Price bid	<b>07.02.2025 at 15: 00 hrs</b> To be communicated separately 02 days after opening of price
Validity of bids	120 days from the date of techno-commercial bid opening.

Offer is invited for the following on FIRM & FOR destination basis as per details given below:

- 1) Only those tenders will be considered who fulfill the terms & conditions mentioned in the tender documents.
- 2) Only those tenders will be considered who will deposit the EMD as per Clause No.1.0 of Part-II GTC by due date.
- 3) The price-bid should be submitted as per tender Price-bid format otherwise the tender is liable for rejection.

**SCHEDULE OF MATERIAL:**

NIT No.	Name of the Item	Quantity
RCF/MECH / FLY ASH STORAGE SILO/ 3078 /2024-25/01	“Design, Engineering, Manufacturing, Supply, erection, Supervision, Commissioning & Hooking up with cement mill for FLY-ASH STORAGE SILO of capacity 200MT with feeding, regulating and measuring system including civil work for Cement Mill of Rajban <u>Uniton turnkey basis.</u>	01set On turnkey basis.

## **List of Annexure**

The tender documents comprise of the following:-

PartI	Instructions to tenderers
PartII	General terms & conditions
Annexure-1 to9	<a href="http://www.ccilttd.in">Download from CCI website www.ccilttd.in.</a> <a href="#">Must be submitted by tenderer duly filled &amp; signed.</a>
Annexure-X	Important Instructions to bidders
Annexure- XII	Part-III: Special Terms & Conditions
Annexure-XIII	Part-IV: Technical Specifications
Annexure-XIV	Input credit Tax
Annexure XV	PG test
Annexure- XVI	List of Consultants
Annexure XVII	Price bid Proforma

Please visit our website [www.ccilttd.in](http://www.ccilttd.in) for covering letter, Part-I-Instruction to tenderers, Part-II-General terms & conditions, Integrity Pact, all formats and submit the same along with Annexure-9, duly filled in along with the tender

**HOD (Mechanical)**

## Important Instructions to Bidders for E-procurement

This is an e-tender event of CEMENT CORPORATION OF INDIA. The e-tender service provider is Central Public Procurement Portal (<https://etenders.gov.in/eprocure/app>), designed, developed and hosted by National Informatics Centre (NIC).

You are requested to read the tender terms & conditions of this tender before submitting your online tender. Successful tenderer who do not comply with the conditions with documentary proof (wherever required) will not qualify in the Tender for opening of price bid.

1.	<p>Process of E-tender :</p> <p><b>Registration:</b></p> <p>The process involves free vendor's registration with Central Public Procurement Portal (<a href="https://eprocure.gov.in/eprocure/app">https://eprocure.gov.in/eprocure/app</a>). Only after registration, the vendor(s) can submit his/their bids electronically. Electronic Bidding for submission of Techno-Commercial Bid as well as Price Bid will be done over the internet. The Vendor should possess Class III signing type digital certificate. Vendors are to make their own arrangement for bidding from a personal computer (PC) connected with Internet. NIC is not responsible for making such arrangement. (Bids will not be recorded without Digital Signature).</p> <p><b>SPECIAL NOTE: THE PRICE BID AND THE TECHNO-COMMERCIAL BID HAS TO BE SUBMITTED ON-LINE AT <a href="https://eprocure.gov.in/eprocure/app">https://eprocure.gov.in/eprocure/app</a></b></p> <p>Vendors are required to register themselves online with <a href="https://eprocure.gov.in/eprocure/app">https://eprocure.gov.in/eprocure/app</a> Visit the <b>sitemap</b> of the portal and click on the <b>Bidder enrollment</b> for registration. Click on the <b>Bidders Manual Kit</b> to familiarize with the working of the portal. In case of any clarification, please contact CCI/ NIC (before the scheduled time of the e- tender).</p> <p><b>Contact person (Cement Corporation of India):</b></p> <table border="1" style="margin-left: auto; margin-right: auto;"> <thead> <tr> <th>S.No</th> <th>Contact Person</th> <th>Contact No</th> <th>E-mail ID</th> </tr> </thead> <tbody> <tr> <td style="text-align: center;">1</td> <td style="text-align: center;">HOD(MM)</td> <td style="text-align: center;">7827989577</td> <td style="text-align: center;"><a href="mailto:ccimmrjo@rediffmail.com">ccimmrjo@rediffmail.com</a></td> </tr> <tr> <td style="text-align: center;">2</td> <td style="text-align: center;">HOD(Mech)</td> <td style="text-align: center;">7827989564</td> <td style="text-align: center;"><a href="mailto:mechrjocci@gmail.com">mechrjocci@gmail.com</a></td> </tr> </tbody> </table> <p><b>B) System Requirement:</b></p> <p>Windows 8,10 professional Operating System, internet browser-9,10 and 11 Signing type III digital signature Java JRE 6 and above</p>	S.No	Contact Person	Contact No	E-mail ID	1	HOD(MM)	7827989577	<a href="mailto:ccimmrjo@rediffmail.com">ccimmrjo@rediffmail.com</a>	2	HOD(Mech)	7827989564	<a href="mailto:mechrjocci@gmail.com">mechrjocci@gmail.com</a>
S.No	Contact Person	Contact No	E-mail ID										
1	HOD(MM)	7827989577	<a href="mailto:ccimmrjo@rediffmail.com">ccimmrjo@rediffmail.com</a>										
2	HOD(Mech)	7827989564	<a href="mailto:mechrjocci@gmail.com">mechrjocci@gmail.com</a>										
2.	<p>(A) Part-A Techno-Commercial bid will be opened electronically on specified date and time as given in the NIT. Bidder(s) can witness electronic opening of bid.</p> <p>(B) Part-B Price bid will be opened electronically of only those bidder(s) who's Part-A Techno-Commercial Bid is found to be Techno-Commercially acceptable by CCI. Such bidder(s) will be intimated date of opening of Part-B Price bid, through valid email confirmed by them.</p> <p>The tenderers are advised to offer their lowest possible rates taking into account the prevailing market conditions. There would generally be no negotiations hence please submit your most competitive prices while submitting the price bid. However, if the rate is still considered high, action as per prevailing instruction/guideline shall be taken.</p>												
3.	All entries in the tender should be entered in online Technical & Commercial Formats without any ambiguity.												
4.	<p>In case of Failure to access the payment towards non-refundable fees for any reason, the vender, in term, will not have the access to on line e-tender and no correspondence in this respect will be entertained and CCI will not be responsible for any such lapses on this account. Bidder(s) are advised to make remittance of non-refundable fees through separate DD well in advance and verify completion of transaction in respect of non-refundable fees.</p> <p>Vendors are instructed to use Upload Documents link in My menu to upload documents in document library. Multiple documents can be uploaded. Maximum size of single document for upload is 5 MB.</p> <p>Once documents are uploaded in the library, vendors can attach documents through Attach Document link</p>												

	against the particular tender. For further assistance please follow instructions of vendor guide
5.	All notices./corrigendum and correspondence to the bidder(s) shall be sent by email only during the process till finalization of tender by CCI. Hence the bidders are required to ensure that their corporate email I.D. provided is valid and updated at the stage of registration of vendor with Tender wizard (i.e. Service Provider). Bidders are also requested to ensure validity of their DSC (Digital Signature Certificate).
6.	The responsibility of downloading the related corrigenda, if any, will be that of the downloading parties.
7.	E-tender cannot be accessed after the due date and time mentioned in NIT.
8	Bidding in e-tender: a.) It is mandatory that all the bids are submitted with digital signature certificate otherwise the same will not be accepted by the system. b.) Buyer reserves the right to cancel or reject or accept or extend the tender in full or part as the case may be without assigning any reason thereof. c.) No deviation of the terms and conditions of the tender document is acceptable. Submission of bid in the e-tender floor by any bidder confirms his acceptance of terms & conditions for the tender. d.) Unit of Measure (UOM) is indicated in the e-tender Floor. Rate to be quoted should be in Indian Rupee as per UOM indicated in the e-tender floor/tender document.
9.	Any order resulting from this open e-tender shall be governed by the terms and conditions mentioned therein.
10.	No deviation to the technical and commercial terms & conditions are allowed.
11.	After submitting online bid, the bidder cannot access the tender, once it has been submitted with digital signature
12.	CCI has the right to cancel this e-tender or extend the due date of receipt of bid(s) without assigning any reason thereof.
13.	The online tender should be submitted strictly as per the terms and conditions and procedures laid down in the website <a href="https://etenders.gov.in/eprocure/app">https://etenders.gov.in/eprocure/app</a> of Antares System Ltd.
14	The bidders must upload all the documents required as per terms of NIT. Any other document uploaded which is not required as per the terms of the NIT shall not be considered.
15.	The bid will be evaluated based on the filled-in technical & commercial formats.
16	The documents uploaded by bidder(s) will be scrutinized. In case any of the information furnished by the bidder is found to be false during scrutiny, punitive action including suspension and banning of business can also be taken against defaulting bidders.
17.	<b>Bidders are requested to read the vendor guide in the page <a href="https://etenders.gov.in/eprocure/app">https://etenders.gov.in/eprocure/app</a> to familiarize themselves with the system before bidding.</b>

For and on behalf of CCI Ltd, Rajban

HOD (MECH.)

### PART-III:-SPECIALTERMS&CONDITIONS

**Tender for “Design, Engineering, Manufacturing, Supply, Supervision, Commissioning & Hooking up with cement mill for FLY-ASH STORAGE SILO of capacity 200MT with feeding, regulating and measuring system including civil work for Cement Mill of Rajban Unit on turnkey basis.**

This tender contains part –I and Part – II general terms, Part – III special terms and conditions, Part –IV Technical Specification & Data sheet and Price bid. All these documents are to be submitted duly signed and stamped by the tenderers .

**Please visit our website [www.ccilttd.in](http://www.ccilttd.in) for Covering letter, Part-I - Instruction to tenderers, Part-II-General terms & conditions, Integrity pact, Annexure-1-9 and submit the same & Annexure-9 duly filled and signed along with the tender.**

In addition to the General Terms and conditions of the tender Part- I & II the following Special terms and conditions also apply to the contract for the supply of above category of material. These special terms and conditions if contradictory to any of the conditions given in Part-I & II shall prevail up on the conditions given there in:-

#### **General Information**

- a) **Site visit:** The parties who wish to quote should visit the site, know its conditions, and study the same before submitting the offer.

#### **ELIGIBILITY CRITERIA**

Average annual financial turnover during last three years ending 31<sup>st</sup> March of previous financial year should be **Rs.55.2 lakhs.**

Experience of having successfully completed the subject work during last seven year for which work order along with work completion certificate copies is to be enclosed for the following:

**Manufacturing, commissioning and erection of Steel silo with proper feeding, regulating and measuring system as a whole done on Turnkey basis.**

Experience of having successfully completed similar works during last seven years ending last day of month previous to the one in which applications are invited should be either of the following:

- a) Three similar completed works costing not less than Rs. 74 lakhs.  
or  
 b) Two similar completed works costing not less than Rs. 92 lakhs  
or  
 c) One similar completed work costing not less than Rs.147 lakhs.

The price should be quoted strictly in our prescribed Price Bid format enclosed with the tender, both in figures and words to avoid ambiguities. In case of any difference in figures & words, the lower amount of the two will be taken into consideration.

#### **3.0) SCOPE OF WORK:**

The detailed Scope of Work will include “**Design, Engineering, Manufacturing, Supply, Supervision, erection, Commissioning & Hooking up with cement mill for FLY-ASH STORAGE SILO of capacity 200MT with feeding ,regulating and measuring system including civil work for Cement Mill of Rajban Unit on turnkey basis.**

#### **4.0 PRICES :**

The Bank Guarantees as mentioned under different columns (Security Deposit, Advance & Performance guarantee etc.) are to be submitted as per CCI formats from any Nationalized/scheduled Bank only of equal amount as per validity indicated in the relevant clause with claim period of further three months.

Prices are to be quoted on firm and F.O.R. destination basis inclusive of Packing / forwarding charges, insurance, freight & Entry Tax etc. No escalation during the period of contract / execution of the entire contract / extended period on whatever reasons thereof will be allowed in prices.

The price should be quoted strictly in our prescribed Price Bid format enclosed with the tender, both in figures and words to avoid ambiguities. In case of any difference in figures & words, the lower amount of the two will be taken into consideration.

A) Price quoted by the party in Price Bid Performa on turnkey basis, will be distributed as under :

S no.	PART	DESCRIPTION	Percentage of Total quoted price
1	PART-A	Civil work	10%
2	PART-B	Supply of the main components such as M.S. Plate & other structural steel members / frames and supply of silo extraction equipments including electrical and instrument items.	45%
3	PART-C	Fabrication & Erection of equipments including steel silo with extraction system in position at all heights, painting and insulation of steel silo etc.	30%
4	PART-D	Commissioning and hooking up with existing system	15 %

Award of contract will be solely at the discretion of CCI.

#### **5.PROJECT SCHEDULE:**

The complete job as per the scope of work given at Part-IV starting from Manufacture, Supply, Erection, Hooking up to successful commissioning is to be completed within **6 months**.

**The successful tenderer has to submit:**

- a) General Layout, PERT Chart, Bar Chart, Manufacturing & Billing schedule for the complete project to CCI.
- b) The successful tenderer has to submit item wise Billing Schedule for the supply of the material in sequence of erection at the site. The billing schedule may be as per price-bid.

#### **7.0 PAYMENT TERMS:**

##### **7.1 PART- A:**

A)5% (five percent) of the total contract price excluding taxes, duties and freight will be released against submission of Basic Engineering drawings, submission & General Lay out drawings, list of equipment items and Civil foundation & Mechanical fabrication drawings duly approved by the consultant (appointed from the list of consultant as per annexure-XVI) will be submitted within 4 weeks time & payment will be released within 15 days against submission of pro- forma invoice, the list of equipments to be supplied (BOQ) is to be

enclosed.

B) Civil works for fly ash silo:

75% (Seventy five percent) civil works which includes PPC, RCC, Rod bending, shorting and foundation along with 100 % taxes, (GST)& freight, if applicable will be released after pre-dispatch inspection & certification by CCI officials on receipt of material at CCI site & payment will be released within 15 days against submission of running bills.

C) **Supply of the main components such as M.S. Plate & other structural steel members / frames and supply of silo extraction equipments including electrical and instrument items.**

75% (Seventy five percent) of prices of components/items & complete bought out material etc., along with 100 % taxes, (GST)& freight, if applicable will be released after pre-dispatch inspection & certification by CCI officials on receipt of material at CCI site & payment will be released within 15 days against submission of running bills.

D) **Fabrication & Erection of equipments including steel silo with extraction system in position at all heights, painting and insulation of steel silo etc.**

75% (Seventy five percent) of prices of components/items & complete bought out material etc., along with 100 % taxes, (GST)& freight, if applicable will be released after pre-dispatch inspection & certification by CCI officials on receipt of material at CCI site & payment will be released within 15 days against submission of running bills.

E) 10% of total amount will be released after completion of PG test. PG test will be conducted after successful running of plant within 30 days.

F) Balance 10% (Ten percent) will be released on submission of B.G. for 10% of total value of contract(excluding taxes & freight) against guarantee/ Warranty, for a period of 06 months.

The following documents are to be submitted for release of payment.

- a) Three copies of invoice along with packing list etc.
- b) Certificate of pre dispatch inspection report by CCI officials at our site.
- c) Copy of equipment/machinery list along with value as per billing schedule to be submitted by the successful tenderer duly approved by CCI.

**8.0) PENALTY/L.D.:**

Any delay beyond the scheduled completion period of the project will attract penalty @ 0.5% delay per fortnight of the total contract value subject to the maximum ceiling of 5% of the total contract value.

The date of successful commissioning on the basis of certificate given by CCI will be treated as the date of completion for the purpose of calculating penalty. However, Performance Guarantee Test shall be carried out as per technical specifications (Part- IV) within a period of 15 days from the date of successful commissioning.



**9.0) SECURITYDEPOSIT:**

The successful tenderer shall have to furnish Security Deposit equivalent to 10 % (ten percent) of the total value of the contract including taxes & duties by way of e-payment / Bank Guarantee (in CCI format to be provided by CCI) in lieu of Clause 2.0 of PART – II of the tender towards satisfactory performance of the contract within 15 days from the date of award of the work order to our Rajban unit.

This Security Deposit shall be refunded within 03 months from the date of satisfactory completion of the work and on basis of certificates given by CCI.

**10.0) INVOICING:**

Three set of copies of invoices showing basic rates, full taxes amount / GST, freight etc. etc. along with packing list, delivery challan, / Lorry Receipt / Parcel way bill or similar other documents are to be sent to the consignee, in case of direct payment option by NEFT/RTGS submitted to CCI duly certified by CCI representative in the manner specified for obtaining payment .Copy of these documents should also be sent immediately after dispatch of the consignment to the destination by fax/mail to avoid demurrage/wharf age.

Three copies of invoices of which one shall be original duly pre-receipted along with Packing list/ delivery challan shall be sent to the paying authority directly.

If any extra charges including wharf age/demurrage are incurred in taking delivery of the consignment due to supplier's failure to observe the conditions mentioned above, the same would be recovered from the supplier.

**11.0)CONSIGNEE:**

HOD(MM)– Rajban (HP). However, the consignment note (C/N)/LR /RR shall be endorsed by CCI in the name of tenderers representative posted at CCI Rajban Unit to facilitate receipt, unloading, transport and safe custody by him at CCI's site.

The successful tenderer should ensure that their site in-charge would be available at Rajban unit, before the first lot of material reaches the unit, for ensuring the receipt, unloading of the material and its safe unloading as well as custody etc.

Transit insurance, insurance during storage will be in the scope of successful Tenderer only.

**12.0) PAYINGAUTHORITY:**

H.O.D.(FINANCE)–RAJBANCEMENTFACTORY,RAJBAN

**13.0) INSPECTION:**

The equipments /materials shall be inspected by CCI at its plant site by the Corporation representative. However, CCI retains the option to inspect the items at suppliers location.

Inspection shall, in no way, absolve the responsibility of the supplier for workmanship, quality and performance guarantee offered by them.

**14.0) WARRANTY/GUARANTEE:**

The tenderer shall guarantee that all the equipments supplied by them whether manufactured at their works or fabricated at our site or by their sub-suppliers or purchased from any other source and supplied to the Corporation will be new and free from all defects and shall be of first class workmanship and quality.

The tenderer shall warranty that to replace, rectify or repair free of cost at our Factory site, the components or the parts of the machinery, including the bought outs which have become unserviceable due to any of the defects within a period of 12 (twelve) months from the date of successful commissioning of the plant or 18 (Eighteen) months from the date of completion of the delivery whichever is earlier. If the tenderer is not complying with the above within a reasonable time, the Corporation shall have the option to rectify, repair or replace the defective parts/machinery after expiry of two weeks "notice and at the risk and cost of the tenderer.

**15.0) TRANSPORTATION, INSURANCE & HANDLING AT SITE:**

The freight and insurance charges will be borne by the successful tenderer. All loading, unloading,

Transportation and storage at site will be done by the successful tenderer. Suitable covered space shall be provided by CCI for critical and other sensitive components free of charges. Erection cum storage insurance shall also be included in the successful tenderers scope.

**16.0) TECHNICAL INFORMATION/DATA:**

The tenderers are required to furnish the information particulars i.e. capacity, power in KW, material of construction & any other special parameters along with their tender.

**17.0) SUBMISSION OF BAR CHART, MANUFACTURING & SUPPLY, BILLING SCHEDULES etc.**

Bar chart, Manufacturing, Supply & Billing schedule within 01 month from the date of LOI.

**REPORTS:**

Weekly report of the dispatches for each previous week shall be sent by the Successful tenderer by Monday of sub sequent week to the CCI, Rajban with following particulars:

- i) Quantity due for supply during the month.
- ii) Quantity actually dispatched with reasons for variation.
- iii) LR/RR No. And date.
- iv) Bill No. and date.
- v) Quantity a waiting dispatches.

**AWARD OF CONTRACT AND OTHER TERMS & CONDITIONS:**

**The Corporation reserves the right:-**

- 01) To accept the sole and unfettered discretion any tender for whole or part quantities/part work or to reject any or all tenders without assigning any reasons thereof and without, entitling the tenderer to any claims whatsoever.
- 02) Firms which have failed to fulfill earlier contractual obligation may not be considered.
- 03) The parties who wish to quote for the Tender shall visit the Factory in working hours from (10 am to 5pm) on any working day & see the site condition, study before submitting the offer.

- 04) Electrical power supply will be provided by CCI as supplied by HPSEPL for machines like, Welding machines, hand lamps, drilling machines etc., free of cost. However same tools and tackles shall be arranged by Tenderer.
- 05) Accommodation for Staff & labour may be provided on chargeable basis subject to availability.
- 06) The lodging/boarding and transportation of the workmen shall be the responsibility of the Contractor / tenderer.
- 07) CCI will not be liable for any loss to the Contractor on account of non- availability of fronts or services due to reasons beyond control of the Corporation.
- 08) Contractors have to arrange required to wear safety shoes, safety helmets and PPE for your workmen engaged in the factory.
- 09) ESIC provision has to be adhered by the contractor & payment of ESI share to Govt., by the contractor timely & proof of the same has to be produced to CCI on monthly basis.
- 10) Mustering in & out of the contractors workforce shall be regulated as per the instructions of our personal security department.
- 11) The Contractor will also obtain Labour License from the relevant labour authority before starting the job at site as required under the Contract Labour (Regulation & Abolition) Act, 1970 & Rules framed therein.
- 12) Contractors are fully responsible for discipline of your workmen inside the factory & lodging place.
- 13) After completion of the work, you have to clear the waste materials generated from the work spot. Otherwise, penalty will be imposed on you as per site conditions.
- 14) Before settlement of final payment, the Contractor has to deposit all the statutory records, registers, payment sheets, payment of compensation towards final payment to the labour and any other records with CCI after 03 months from the date of completion/termination of contract.
- 15) PAN No. under I.T. Act has to be furnished by the Contractor before release of 1<sup>st</sup> R.A. Bill payment by CCI. TDS will be deducted as applicable.
- 16) In case of any dispute, the findings of G.M., CCI-Rajban shall be final and binding to all and in case of any dis-satisfaction with the decision of G.M., CCI-Rajban, it will be subject to jurisdiction of Civil Courts, Paonta Sahib, Sirmour Dist., H.P.
- 17) A separate agreement on a non-judicial stamp paper has to be executed by the Contractor(s) to whom the work will be awarded on successful tenderer(s).
- 18) Tenderer are fully responsible for discipline of your workmen inside the factory & lodging place.
- 19) GST-TDS @ 2% will be deducted at source as TDS on GST.

## PART-IV:TECHNICAL SPECIFICATIONS

**Tender for Design, Engineering, Manufacturing, Supply, Supervision, erection, Commissioning & Hooking up with cement mill for FLY-ASH STORAGE SILO of capacity 200 MT with feeding, regulating and measuring system including civil work for Cement Mill of Rajban Unit on turnkey basis.**

### 1. PRESENT SYSTEM :Brief description:

Currently feeding Fly-ash to the Cement mill through hopper connected to mill feedingbelt.

**Soil investigation report of CCI Plant :**Safe load bearing capacity of Black Cotton soil is 5.0 MT / M<sup>2</sup>. However, the foundation may be designed based on assumption that it will rest on Rock/Limestone of safe bearing capacity of 40.0MT/M<sup>2</sup>.

Level of Soil: CCI Rajban plant is covered by Rock soil layer of about (One) 1 Mtr. Average thickness over hard rock(Limestone strata).

### **Existing Process &Equipment specifications details:**

There is only one Cement Mill of cap 35 TPH in operation the mill are of open circuit type .Currently feeding Fly-ash to the Cement mill through hopper connected to mill feeding belt.

### **PROPOSEDSYSTEM:**

**Installation of dry flyash storage silo with extraction regulating and measuring system and feeding to mill inlet through air slides.**

#### **1. Scope of Work.**

- a) Design, Engineering, Manufacture, Supply, Erection, Commissioning of New Fly-ash Steel Silo of Capacity 200MT with extraction system as per design specifications .Electrical and Instrumentation schemes and supply of the equipments as per requirement of tender.
- b) The civil foundation/ concrete work is in the scope of contractor & also the final grouting of the equipments will be in the scope of successful tenderer.

#### **2. Activity wise break up of total scope of works Is asunder:-**

- a) Installation of new Fly-ash steel silo of cap200MT
- b) The civil foundation/ concrete work is in the scope of contractor & also the final grouting of the equipments will be in the scope of successful tenderer
- c) Manufacture & Supply of equipments/ components.
- d) Fabrication, Erection and commissioning of the equipments by the tenderer of all items related to tender.

#### **3. Sequence of activities and payments there of:**

- a) Successful tenderer has to accept the order and sign the Agreement within a week's time.
- b) Submission of document of Design, Engineering, Drawing, Layout of Civil/Structural and Plant layout within 30 days duly approved by the consultant (appointed from the list of consultants as per (annexure). Review/Approval from CCI will be accorded within 15 days from date of

submission and after having discussion/clarifications of points. Consultant will make at least one visit for finalization of design drawing and at least two visits during execution of the project.

- c) Submission of Bar chart, & Billing schedule within 01month from the date of work order.
- d) Supply of materials and equipment for civil work viz., Excavation equipment, Tor steel, Shuttering material, ready-mix machines/ installation etc.
- e) Supply of bought out items of mechanical, Electrical & Instrumentation
- f) Supply / fabrication of metal plate and structural steel for site fabrication of storage silo duct, chutes, connecting ducts etc.
- g) Supply of bought out items of mechanical, Electrical & instrumentation viz., fans and its motors, Bag house material, conveyors, panels MCC, cables etc.
- h) Erection of equipments in sequence after Civil work.
- i) Electrical and instrumentation Work.
- j) Charging of control panels and simulation
- k) Hooking up with existing system & trail run and Performance Guarantee test.

#### 4. SCOPEOFWORKALONGWITHOTHERALLIEDDETAILS:-

<b>1.0</b>	<b>01</b>	<b>PIPING 125 NB (~30 MTR), FITTINGS ETC.</b>	<b>VENDOR</b>
		Hose Pipe 150 NB, Elbows, Bends, Fittings etc. to unload the Material From Bulk Tankers and feeding to Silo Top.	
<b>1.1</b>	<b>01</b>	<b>FLEXIBLE CONNECTION HOSE (7 MTR)</b>	<b>VENDOR</b>
<b>2.0</b>	<b>01</b>	<b>QUICK RELEASE COUPLING WITH FLEXIBLE HOSE</b>	<b>VENDOR</b>
<b>3.0</b>	<b>02</b>	<b>CAST BASALT BENDS (90 DEG.) or equivalent</b>	<b>VENDOR</b>
<b>4.0</b>	<b>01</b>	<b>ROOT BLOWER</b>	<b>VENDOR</b>
<b>5.0</b>	<b>01</b>	<b>TARGET BOX</b>	<b>VENDOR</b>
<b>6.0</b>	<b>01</b>	<b>SILO FEED SOCKET</b>	<b>VENDOR</b>
		Size : Approx. 500 mm	
<b>7.0</b>	<b>01</b>	<b>STEEL SILO</b>	<b>VENDOR</b>
		Capacity : 200 MT	
		MOC of Plate : MS	
		Diameter : As per Design	
		Overall Height of Silo : As Per Design	
		Height From Ground :	

		Thickness	:	As per Design (to be provided by tenderer)	
		Type	:	Cylindrical+ Conical	
<b>7.1</b>	<b>01</b>	<b>PRESSURE RELIEF VALVE (AIR BALANCE VALVE) WITH MOUNTING SOCKET</b>			<b>VENDOR</b>
		Size	:	Approx. 500 mm	
<b>7.2</b>	<b>01</b>	<b>HIGH LEVEL INDICATOR WITH MOUNTING SOCKET (CAPACITANCE TYPE)</b>			<b>VENDOR</b>
<b>7.3</b>	<b>01</b>	<b>SILO INSPECTION DOOR (TOP)</b>			<b>VENDOR</b>
		Size	:	Approx. 1000 mm	
<b>8.0</b>	<b>01 LOT</b>	<b>AERATION PADS FOR SILO AERATION (OPEN AIR SLIDE)</b>			<b>VENDOR</b>
		Size	:	200 mm	
		<b>SPECIAL SYNTHETIC FABRIC (Duly fixed on air slides)</b>			
		Size	:	265 mm	
		Temperature	:	140 Deg. C	
		Melting Point	:	250 Deg. C	
		Thickness Approx	:	4.8 mm	
		Air Permeability	:	400 m <sup>3</sup> /m <sup>2</sup> /hr. at 800 mm WG	
<b>9.0</b>	<b>01</b>	<b>ROTARY PISTON BLOWER FOR SILO AERATION</b>			<b>VENDOR</b>
		Capacity	:	7 m <sup>3</sup> /min	
		Pressure	:	600 mbar	
		Motor	:	15 kW / 1500 RPM	
		Complete With accessories such as suction filter, suction filter, suction silencer, and discharge silencer, on return valve, pressure gauge, safety valve, v – belt guard, drive and driven pulley, anti vibrating pad, interconnecting pipe line with flanges, foundation, base frame and drive.			
<b>9.1</b>	<b>01 LOT</b>	<b>AIR SUPPLY PIPING FOR BLOWER</b>			<b>VENDOR</b>
		Between Roots Blower air heater and fluidization system of silo including fittings, flanges, connecting bolts gasket, pipe clamps, flexible joint and valves at discharge piping.			

<b>9.2</b>	<b>01 LOT</b>	<b>PNEUMATIC BUTTERFLY VALVE</b>	<b>VENDOR</b>
		With Pneumatic Piston, solenoid valves and limits switches.	
<b>9.3</b>	<b>01 LOT</b>	<b>MANUAL BUTTERFLY VALVE</b>	<b>VENDOR</b>
		Manually Operated piston without limit switches.	
<b>10.0</b>	<b>01</b>	<b>MANUAL CUT OFF GATE</b>	<b>VENDOR</b>
		Size : 500 mm	
		With hand wheel, frame, slide plate, spindle, gasket and fasteners.	
<b>11.0</b>	<b>01</b>	<b>PNEUMATIC – CUT OFF GATE (LINEAR)</b>	<b>VENDOR</b>
		Size : 550 mm	
		Suitable for emergency shut off in case of power failure.	
		Actuated by pneumatic cylinder, complete with solenoid valve, slide gate plate, pneumatic fittings, gaskets and fasteners.	
<b>12.0</b>	<b>01</b>	<b>FLOW CONTROL GATE – (MOTORIZED)</b>	<b>VENDOR</b>
		Size : 550 mm	
		With a provision to control the output flow, which can be set as per required output flow. Flow control gate shall be actuated by a motorized actuator. Motor 0.37 kW	
		Aerated Roller room made of steel plate with special synthetic fabric and perforated plate cover, air supply socket.	
		The supply shall include duly fixed synthetic fabric, inlet socket, air supply socket, inspection cover top and lower box, gasket, connecting bolts.	
<b>13.0</b>	<b>01</b>	<b>DISTANCE PIECE</b>	<b>VENDOR</b>
		Between Flow Control Gate & Air Slide.	
		Size : 550 mm	
		Length : 250 mm (Approx)	

<b>14.0</b>	<b>01</b>	<b>CLOSED AIR SLIDE</b>	<b>VENDOR</b>
		Size	: 550 mm
		Length	: 2 Mtr. (Approx.)
		Slope	: 8°
		The supply shall include duly fixed synthetic fabric, inlet socket, air supply socket, vent, socket, inspection cover top and lower box compensating longitudinal variation.	
		<b>SPECIAL SYNTHETIC FABRIC (duly fixed on air slide)</b>	
		Size	: 565 mm
		Length	: 2 mtr. (Approx)
		Temperature	: 140 Deg. C
		Melting Point	: 250 Deg. C
		Thickness approx	: 4.8 mm
		Air Permeability	: 400 m <sup>3</sup> /m <sup>2</sup> /hr. at 800 mm WG
<b>14.1</b>	<b>01</b>	<b>FLUID SLIDE SUPPORT</b>	<b>VENDOR</b>
<b>15.0</b>	<b>01</b>	<b>HIGH PRESSURE FAN</b>	<b>VENDOR</b>
		Capacity	: As per design
		Pressure	: As per design
		Drive Motor`	: As per design
<b>15.1</b>	<b>~5 Mtr</b>	<b>AIR SUPPLY PIPING</b>	<b>VENDOR</b>
<b>16.0</b>	<b>01</b>	<b>PNEUMATIC CUT OFF GATE – (LINEAR)</b>	<b>VENDOR</b>
		Size	: 550 mm
		Suitable for emergency shut off in case of power failure.	
		Actuated by pneumatic cylinder, complete with solenoid valve, slide gate plate, pneumatic fittings, gaskets and fasteners.	
<b>17.0</b>	<b>01</b>	<b>DISCHARGE SPOUT</b>	<b>VENDOR</b>
		Size	: 550 mm
<b>18.0</b>	<b>01</b>	<b>CONNECTING CHUTE</b>	<b>VENDOR</b>
<b>19.0</b>	<b>01</b>	<b>SOLID FLOW METER</b>	<b>VENDOR</b>



		Capacity	:	More than 12 TPH		
		<b><u>SYSTEM</u></b>				
		Microprocessor	:	8xC51FA		
		Memory	:	64K EPROM 8K RAM with integral Battery Backup.		
		<b><u>CONSTRUCTION</u></b>				
		Housing	:	Aluminium enclosure in DIN Format		
		Colour	:	Silver Anodized		
		Dimensions (W*H*D)	:	144 * 72 * 245 mm		
		Control Panel cutout	:	138 * 68 mm		
		Control Panel Thickness	:	Min. 1 mm Max. 15 mm		
		Mounting Space	:	Approx. 300 mm Deep with connector		
		Wall clearance	:	Min. 100 mm upward Min 60 mm on each side with natural convention		
		Weight	:	Approx. 1.0 Kg		
		Mounting	:	2 Grub Screw at the sides.		
		Protection Type	:	IP 54 (Front)		
		<b><u>DISPLAY</u></b>				
		Display	:	2 Lines * 16 Character Vacuum Fluorescent Display		
		Colour	:	Blue		
		Type	:	VFD, alphanumeric		
		Digit Height	:	5.5 mm legible to approx 2 m Approx 40 °		
		Dimension Sign	:	Kg. t (User Selectable)		
		<b><u>CONTROL PANEL</u></b>				
		Type	:	Membrane foil with pressure sensitive Keyboard.		
<b>20.0</b>	<b>01</b>	<b>CONNECTING CHUTE</b>			<b>VENDOR</b>	
<b>21.0</b>	<b>01</b>	<b>CLOSED AIR SLIDE</b>			<b>VENDOR</b>	

		Size	:	200 mm	
		Length	:	25Mtr. (Approx)	
		Slope	:	8 Deg.	
		The supply shall include duly fixed synthetic fabric, inlet socket, air supply socket, vent, socket, inspection cover top and lower box compensating longitudinal variation.			
		<b>SPECIAL SYNTHETIC FABRIC (duly fixed on air slide)</b>			
		Size	:	265 mm	
		Length	:	25Mtr. (Approx)	
		Temperature	:	140 Deg. C	
		Melting Point	:	250 Deg. C	
		Thickness approx	:	4.8 mm	
		Air Permeability	:	400 m <sup>3</sup> /m <sup>2</sup> /hr. at 800 mm WG	
<b>21.1</b>	<b>10</b>	<b>FLUID SLIDE SUPPORT</b>			<b>VENDOR</b>
<b>22.0</b>	<b>01</b>	<b>PNEUMATIC CUT – OFF GATE (LINEAR)</b>			<b>VENDOR</b>
		Size	:	200 mm	
		Suitable for emergency shut off in case of power failure.			
		Actuated by pneumatic cylinder, complete with solenoid valve, slide gate plate, pneumatic fittings, gaskets, 2 nos. sensors, proxy and fasteners			
<b>23.0</b>	<b>02</b>	<b>DIVERSION BOX</b>			<b>VENDOR</b>
		Consisting of 1 Inlet & 1 Outlet.			
		Size	:	Ø 600 mm	
		Outlet Flange Size	:	200	
<b>24.0</b>	<b>01</b>	<b>DISCHARGE SPOUT</b>			<b>VENDOR</b>
		Size	:	200 mm	
<b>25.0</b>	<b>01</b>	<b>HIGH PRESSURE FAN</b>			<b>VENDOR</b>
		Capacity	:	16 m <sup>3</sup> /min	
		Static Pressure	:	600 mm WG	
		Motor	:	5.5 kW / 3000 RPM	
<b>25.1</b>	<b>~28</b>	<b>AIR SUPPLY PIPING</b>			<b>VENDOR</b>

	<b>Mtr</b>		
<b>26.0</b>	<b>01</b>	<b>DUST COLLECTOR</b>	<b>VENDOR</b>
		Capacity	: 10000 m3/hr
		Air to cloth Ratio	: 1.2 m3/m2/min
		Outlet emission	: Less Than 30 mg/Nm3
		The Dust collector Shall be complete with cages, filter bags, mouth pieces, blow tube, solenoid valve, diaphragm operated timer, air receiver, filter housing, collecting hopper, filter top plenum, door with handle, inlet/outlet companion flange.	
<b>26.1</b>	<b>01</b>	<b>CENTRIFUGAL FAN WITH MOTOR FOR ABOVE DUST COLLECTOR</b>	<b>VENDOR</b>
		Capacity	: 11500 m3/hr
		Static Pressure	: 300 mm WG
		Motor	: 7.5 kW X 1500 RPM
<b>26.2</b>	<b>01 LOT</b>	<b>DEDUSTING PIPING</b>	<b>VENDOR</b>

**Note:- The above mentioned values/specifications are for reference & approximate pl.**

**Any other items not mentioned above but required for smooth functioning of fly ash system are to be provided by the party /tenderer.**

**5. Supply of the following items (Bought out items):**

- a. All equipments as per technical specifications & M.S. Steel storage silo thickness of the plate as per design and M.S. plates and its structural steel should be from reputed make preferably SAIL/TATA/JINDAL.
- b. Welding electrodes make of EWAC/ADORFON/D&H should be used.

**6. Electrical/Instrumentation: Scope of Supply and work:**

- a. Incoming & outgoing power cable, control supply etc. shall be in the vendor scope.
- b. As all the DOL, RDOL drives, field instruments such as level transmitter (4-20mA output), pressure/draft transmitters (4-20mA output) in the vendor Scope.
- c. Suitable local on/lockable off push buttons are to be provided for all the drives in the vendor Scope.
- d. MCC panel should be supply in the vendor scope.
- e. All the equipments are to be suitably mounted, assembled, aligned and inter- connected with various sections, checking of each components for satisfactory electrical operation and contacts, mounting of loose supplied components to their respective positions, setting of relays in accordance with the requirements, Mounting and properly wired of all converters, Isolators, silo level indicators, Transmitters and Hooking up with the existing in the vendor Scope.
- f. Cable tray, earthing of panel & motors.
- g. Only energy efficient motor having minimum energy efficiency class- IE2 as per IS: 12615 of kirlosker /Crompton/ABB/Bharat Bijlee/Siemens /BHEL/ Havells make with IP55 enclosure and Totally Enclosed Fan Cooled (TEFC) shall be used. Aluminum body not acceptable. IS applicable – IS 4691, IS-

12615,IS325,IS-1231,IS6362.

- h. Tenderer has to supply suitable MCC. The Motor Control Centers shall be metal clad, totally enclosed, rigid, floor mounting, air insulated, and cubicle type with separate modules for use on 415 volts 3 phase 50 cycles system with a fault level of 50 KA RMS symmetrical.
- i. Control panel with analogs( 4-20mA) and digital (220VAC) indication shall be provided by vendor. Separate operator desk shall be provided for operation with On/Off switch, indication and mimic. All electrical and instrumentation drawing shall be approved before manufacturing.

**7. INSULATION ON THE COMPLETE STEEL TANK AND DUCTS :**

- a. The tenderer shall use lightly resin bonded rock wool mattresses having density of 100 kg/m<sup>3</sup> (minimum) with one side G.I. wire netting of ¾” x 24 SWG as insulation material confirming to IS: 8183.
- b. SWG plain aluminum sheet shall be used as cladding material over the insulation.
- c. Providing of 10G G.I. sheets lugs to hold the insulation mattress in position for equipments of higher diameter ducts.
- d. Providing& fixing of MS Spacer rings made out of 25 x 3 mm MS Flat to hold the sheet metal cladding in position for equipments and pipe lines above 4” diameter only.
- e. Providing & fixing of 22 SWG Plain aluminum sheet with proper grooves and overlaps and held in position by means of GI self-tapping screws and sealing the sheet joints using suitable sealant. Further, the cladding shall be secured by means of Aluminum Band20mm x 22 G at 45mm c/c.
- f. The contractor has to make all arrangements, including scaffolding arrangement, tools & tackles, required manpower for carrying out the jobs.
- g. The contractor may use better insulation material & method subject to approval of CCI

**8. TERMS & CONDITIONS FOR ERECTION AND COMMISSIONING**

**a) RESPONSIBILITY OF THE SUCCESSFUL TENDERER:**

A schedule for the erection work will be made out by the contractor keeping in view the supply schedule and the construction schedule for carrying out the job sequentially within the overall time schedule as specified in the order.

**b) TOOLS AND TACKLES**

Arrangement of all tools and tackles, instruments, cranes, winches, derricks, ropes, sleepers, lifting and transport equipment, jacks, chain blocks, crowbars, welding and gas cutting sets, testing and checking equipments etc. in adequate numbers will be the responsibility of tenderer.

**c) CHECKING OF EQUIPMENT FOUNDATION**

Checking of levels, foundation center distances cross checking, alignment of Civil foundations and structure for machinery installation.

**9. COMPLETION OF ERECTION WORK**

- a. Rectification/modification as required before erection as well as during erection and after trial run of machineries with and without load, shall be the responsibility of the contractor.
- b. Arrangement of adequate number of safety equipments for erection and storing shall be the responsibility of the contractor.
- c. Arrangement of all necessary erection materials like machined and un-machined packing will be made by the contractor.
- d. Erection, staging structures and necessary supporting hardware consumables as may be required shall be arranged by the contractor.
- e. The contractor may carry out fabrication work at site for which facilities like space and

power supply will be provided free of cost by CCI.

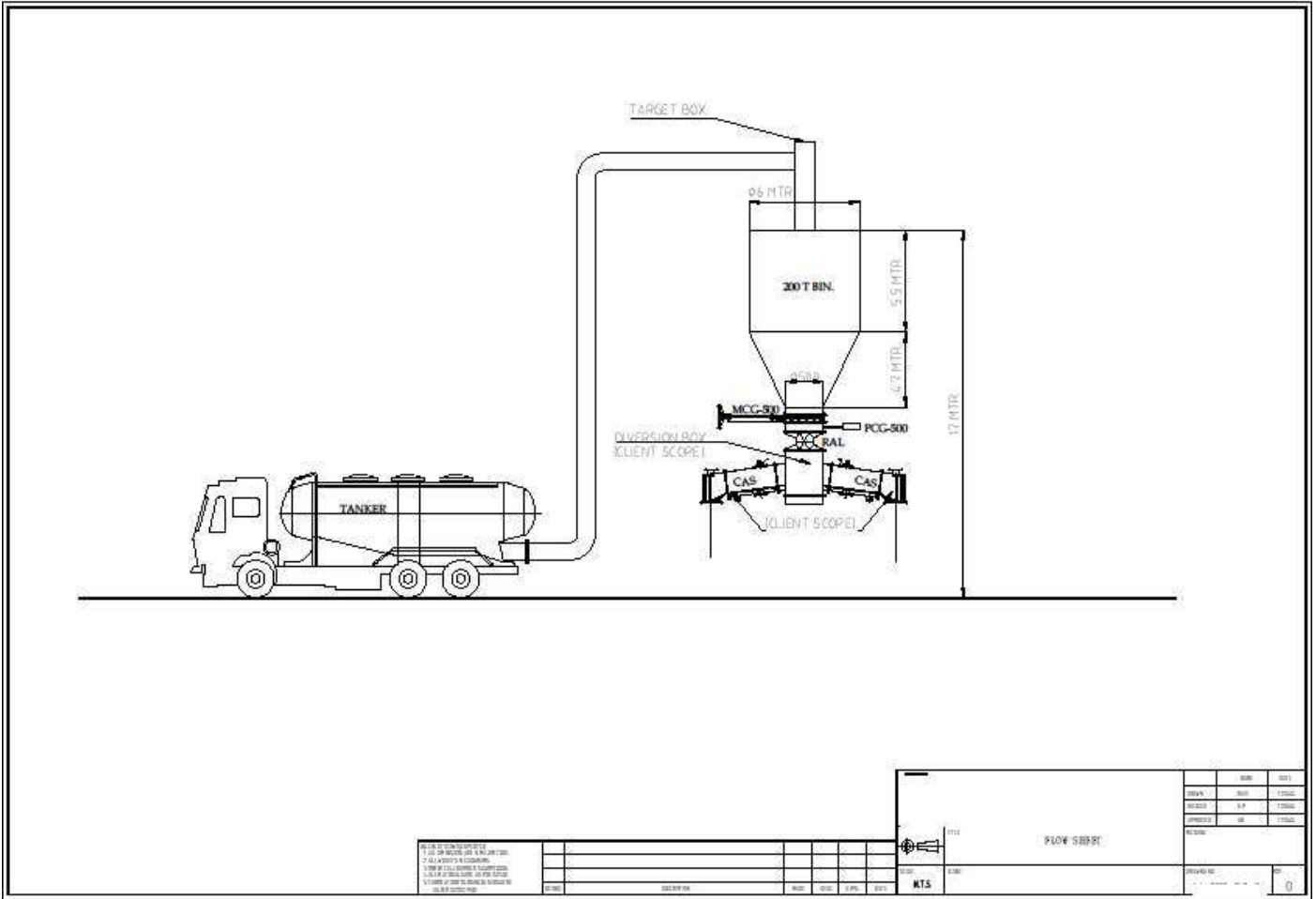
- f. The contractor at his own cost for all equipments, platform, hand railings, supports and structures etc will do painting with red-oxide and two coats of enamel paint.

**Site Facilities:** CCI will provide necessary water and electrical power facilities and cement within the factory premises for the purpose of erection and civil works to the contractor @free of cost. Land for storage yard, site office and fabrication yard shall be made available to the contractor within the factory premises free of cost.

The accommodation to the Staff/Engineer of the contractor shall be provided on chargeable basis, if available. No transportation will be provided by CCI.

## **10. TRIALRUNSANDCOMMISSIONING**

- a) After the completion of erection work of mechanical, electrical and instrumentation equipments, party shall offer the entire system for trial runs and commissioning. The alignment of all the drives and the equipments shall be checked jointly and defects, if any, shall be rectified by the party.



**Note:- The drawing is indicative only & for reference. It may vary as per site condition/requirement.**

## **11. Public Procurement(Preference to Make in India):**

a. The Procurement of goods and services under this tender will be regulated as per the applicable provisions of Public Procurement (Preference to Make in India), order 2017 of MoC&I (DIPP), Government of India and revised orders issued on 16.09.2020. As per said orders Bidders/Contractors are divided into three categories based on Local Content. Local content in the context of this policy is the total value of the item procured(excluding net domestic in direct taxes)minus the value of imported content in the item (including all customs duties) as a proportion of the total value, in percent.:

a) 'Class-I Local Supplier' with local content equal to or more than 50%.

b) 'Class-II Local Supplier' with local content equal to or more than 20%, but less than that applicable for Class-I Local Supplier.

c) 'Non-Local Supplier' with local content less than that applicable for Class-II local Supplier, in (b) above.

The 'Class-I Local Supplier'/ 'Class-II Local Supplier' at the time of bidding shall be required to indicate the percentage of local content and provide self-certification that the item offered meets the local content requirement for 'Class-I Local Supplier'/ 'Class-II Local Supplier', as the case may be. Bids with false declarations regarding Local contents shall be rejected as unresponsive, in addition to punitive actions under the MII orders and for violating the Code of Integrity as per the Tender Document. Bidders have to submit self-declaration of their local content and their status as Class-I/ Class-II /Non-local Supplier and their eligibility to participate in this tender. If a Bidder is claiming exemption (as obtained from relevant authorities) from meeting the stipulated local content on account of manufacturing the production India under a license from a foreign manufacturer with the precise phrasing of increase in local content, he must provide proof thereof.

**b. Purchase preference as per Make in India will be exercised as follows:**

### **(a) If the Goods are Not Divisible in nature:**

Among all qualified bids, the lowest bid shall be termed as L-1. If L-1 is 'Class-I Local Supplier'(Under MII clause at 1.12.1),the contract shall be awarded to L-1.

If L-1 is not 'Class-I Local Supplier', the lowest bidder among the 'Class-I Local Supplier' shall be invited to match the L-1 price subject to Class-I Local Supplier's quoted price falling within the margin of purchase preference, and the contract shall be awarded to such 'Class-I Local Supplier 'subject to matching the L-1 price.

If such lowest eligible 'Class-I local Supplier' fails to match the L-1 price, the 'Class-I local Supplier' with the next higher and so on, bid within the margin of purchase preference shall be invited to match the L-1 price,

and the contract shall be awarded accordingly. If none of the 'Class-I local Supplier' within the margin of purchase preference matches the L-1 price, the contract shall be awarded to the L-1 bidder.

**(b) If the Goods are Divisible in nature:**

Among all qualified bids, the lowest bid shall be termed as L-1.

If L-1 is 'Class-I local Supplier', the contract for full quantity shall be awarded to L-1. If the L-1 bid is not a 'Class-I local Supplier', 50% of the order quantity shall be awarded to L-1. After that, the lowest bidder among the 'Class-I local Supplier' whose quoted price falls within the margin of purchase preference shall be invited to match the L-1 price for the remaining 50% quantity, and a contract for that quantity shall be awarded to him, subject to matching the L-1 price. In case such lowest eligible 'Class-I local Supplier' fails to match the L-1 price or accepts less than the offered quantity, the next higher 'Class-I local Supplier' within the margin of purchase preference shall be invited to match the L-1 price for the remaining quantity and so on, and the contract shall be awarded accordingly. If some quantity is still left uncovered on Class-I local Suppliers, such balance quantity shall also be ordered on the L-1 bidder.

**(c) Where contract is to be awarded to multiple bidders:**

In Bids where contracts are to be awarded to multiple bidders subject to matching of L-1 rates or otherwise, the 'Class-I Local Supplier' shall get purchase preference over 'Class-II Local Supplier' as well as 'Non-Local Supplier', as per following procedure:

If there is sufficient local capacity and competition for the item to be procured, as notified by the nodal Ministry, only Class I Local Suppliers shall be eligible to bid. As such, the multiple Contractors, who would be awarded the contract, should be all and only 'Class I Local Suppliers'.

In Bids, other than the sufficient local capacity and competition for the item to be procured, 'Class II local Suppliers' or both 'Class II local Suppliers' and 'Non local Suppliers' may also participate in the tender process along with 'Class I Local Suppliers'.

If 'Class I Local Suppliers' qualify for the contract award for at least 50% of the tendered quantity in tender, the contract shall be awarded to all the qualified bidders as per award criteria stipulated in the Tender Documents. However, in case 'Class I Local Suppliers' do not qualify for the award of contract for at least 50% of the tendered quantity as per award criteria, purchase preference should be given to the 'Class I local Supplier' over 'Class II Local Suppliers'/'Non-local Suppliers' provided that their quoted rate falls within the margin of purchase preference of the highest bid considered for award of contract. To ensure that the 'Class I Local Suppliers' taken in totality are considered for award of contract for at least 50% of the tendered quantity.

First purchase preference has to be given to the lowest among such eligible 'Class-I local Suppliers', subject



to its meeting the prescribed criteria for the award of contract as also the constraint of the maximum quantity that can be sourced from any single Contractor. If the lowest among such 'Class-I local Suppliers' does not qualify for purchase preference because of aforesaid constraints or does not accept the offered quantity, an opportunity shall be given to next higher among such 'Class-I local Supplier', and so on.

To avoid any ambiguity during bid evaluation process, the procuring entity may stipulate its own tender specific criteria for award of contract amongst different bidders including the procedure for purchase preference to 'Class-I Local supplier' within the broad policy guidelines.

**CEMENT CORPORATION OF INDIA LIMITED  
RAJBAN CEMENT FACTORY  
(A Govt. of India Enterprises - ISO 9001:2015 Certified)  
INPUT-TAX CREDIT**

We are entitled for availing of INPUT-TAX Credit in respect of GST paid on materials. For availing INPUT-TAX Credit, following documents are required to be submitted along with supply of materials:-

- i) A clear GST invoice, having HSN code duly stamped and signed by the supplier.
- ii) The GST rate and amount should be clearly shown separately in the Tax-invoice.
- iii) The copy of the Tax-invoice or as specified in GST meant for transporter.
- iv) Party will pay GST timely to Government and upload invoice on GST portal.

Please confirm all the documents would be submitted along with each and every supply for availing the INPUT-TAX Credit. In case any of the documents is not submitted, INPUT-TAX Credit is not allowed by Tax authority on the GST paid by us, and then the amount will be debited from your bill for the concerned supply or other payment.

Please submit this Annexure duly sealed and signed along with techno-commercial bid as token of acceptance of the above.

Signature of Tenderer  
with stamp & seal

## **PERFORMANCE GUARANTEE TEST**

### **A. Performance Guarantee Test for System as a whole**

- a. The duration of the performance guarantee test for the system as a whole shall be 16 hours (3 trials each of 16 hrs). For any interruption in between exceeding 2 hours, the duration of the test shall be extended accordingly. However, if the total stoppage of the complete system / exceeds 06 hours, the test is to be repeated for another 16 hours in the same manner.
- b. The extraction system should be able to provide material to the mill with respect to set point (Max set point: 10 tph & Minimum set point: 01 tph) given in the system with 5% margin.
- c. The tenderer shall rectify the defects, if any, observed during the above test, and only after the rectification of such defects test can be further conducted.
  - (i) Dust emission of installed bag filters should be less than 30mg/Nm<sup>3</sup>.

Party/ Tenderer has to achieve the required emission level by replacing bags and other modification of the system to get ultimately either equal or less than 30mg/Nm<sup>3</sup> with no extra cost to M/s CCI.
  - (ii) During the test, the actual Kw and current drawn at the full load capacity of the system by each drive shall be compared with the rated current for 10 per cent margin. The tenderer shall be required to replace the drive in which 10% margin is not available over and above the rated capacity.
- d. The Party shall provide the instruments, including electrical meters, tools and tackles, equipment required for the performance guarantee tests. All arrangements for the performance guarantee test shall be carried out by the Party.
- e. The Party shall guarantee the successful and satisfactory operation of the equipments and materials supplied, erected and commissioned under the contract, as per the specifications and documents.
- f. The modifications / alterations/rectification, if any, shall be carried out immediately on completion of the performance guarantee test, but in any case within a period of 15 days from the date of performance guarantee test. In case the Party fails to carry out the modifications / alterations /rectification within the above period, CCI reserves the right to carry out the same at the risk and cost of the Party.

**LIST OF CONSULTANTS**

1. M/s. Holtec Consulting (P) Ltd. SushantLok Phase I, Sector 43,  
Gurgaon, Haryana 122009  
**PHONE:**0124 404 7900  
Fax : 0124 –2385114  
E-mail :info@holtecnet.com
2. M/s Development Consultants Ltd  
House, Block DG 4, Sector 2,  
Bidhannagar, West Bengal 700091  
Tel.:033 4012 5300, 22297601/609
3. M/s. ERCOM Consulting Engineers Pvt. Ltd.  
FAX : 011-25779152  
C-1, C Block Community Centre 011-2574391  
NarainaVihar, New Delhi-110028  
Tel : 011-25799153  
E- mail :ercom @ vsnl.com
4. National Council for Cement  
Building Materials(NCBM)  
34, Km. Stone, Delhi Mathura Road (NH-2)  
Ballbgarh –121004 Haryana  
E.Mail:nccbm@glassdl0.vsnl.net.in  
Tel :0129-5246175 FAX: 0129-5242100
5. M/s. EXELON Techno Engineers  
AmanChambers, 2<sup>nd</sup>Floor  
47/21-22. Old RajinderNagar Main,  
Pusa Road New Delhi-110060  
Tel : 011-25731321, 25758624  
FAX : 011-25739719
6. Metallurgical &EngineeringConsultants  
(India) Ltd. -2502214  
Doranola, Ranchi-834002  
Jharkhand -2501216  
Tel : 0651-2501002  
FAX : 0651-2502189

Any other reputed consultant having sufficient experience in the line may be considered by CCI, for which prior approval shall be obtained by the tenderer.

**The tender will nominate three names of the consultant from above Annexure –XVI and CCI will decide the consultant for the said project from these names.**

**Annexure-XVII**

**PRICEBIDPROFORMA**

**Tender for Design, Engineering, Manufacturing, Supply, erection, Supervision, Commissioning & Hooking up with cement mill for FLY-ASH STORAGE SILO of capacity 200MT with feeding & regulating system including civil work for Cement Mill of Rajban Unit on turnkey basis.**

**TenderNo.RCF/MECH / FLY ASH STORAGE SILO/ 3078 /2024-25**

**Dt:**

S.No	Description	Basic price (RS)	Freight (Rs.)	GST (%)	Total Amount( RS)	Total Amount In words
1	<u>Design, Engineering, Manufacturing, Supply ,erection, Supervision, Commissioning &amp; Hooking up with cement mill for FLY-ASH STORAGE SILO of capacity 200MT with feeding &amp; regulating system including civil work for Cement Mill of Rajban Unit on turnkey basis.</u>					

**NOTE:**

A) Price quoted by the party in Price Bid Performa on turnkey basis, will be distributed as under :

S no.	PART	DESCRIPTION	Percentage of quoted basic price
1	PART-A	Civil work	10%
2	PART-B	Supply of the main components such as M.S. Plate & other structural steel members / frames and supply of silo extraction equipments including electrical and instrument items.	45%
3	PART-C	Fabrication &Erection of equipments including steel silo with extraction system in position at all heights, painting and insulation of steel silo etc.	30%
4	PART-D	Commissioning and hooking up with existing system	15 %

2. The prices are to be quoted as per clause. 4 of Part-III - Special terms & conditions.

Signature

